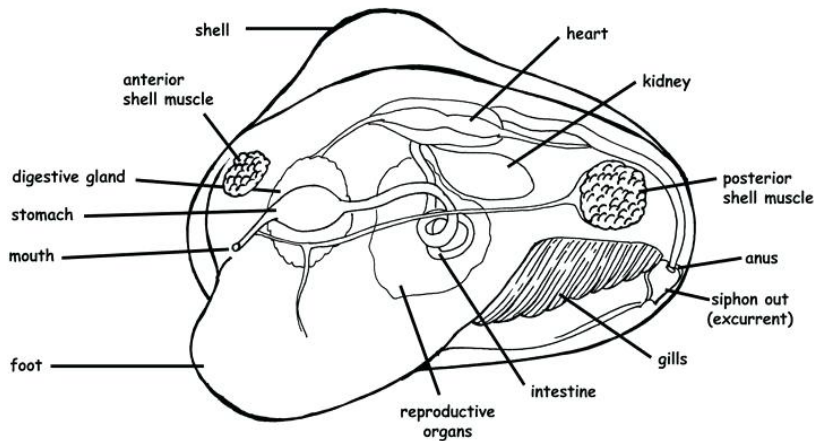
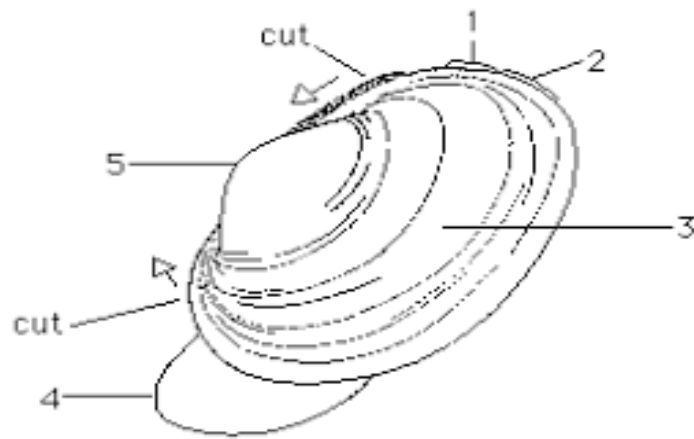


Phylum Mollusca

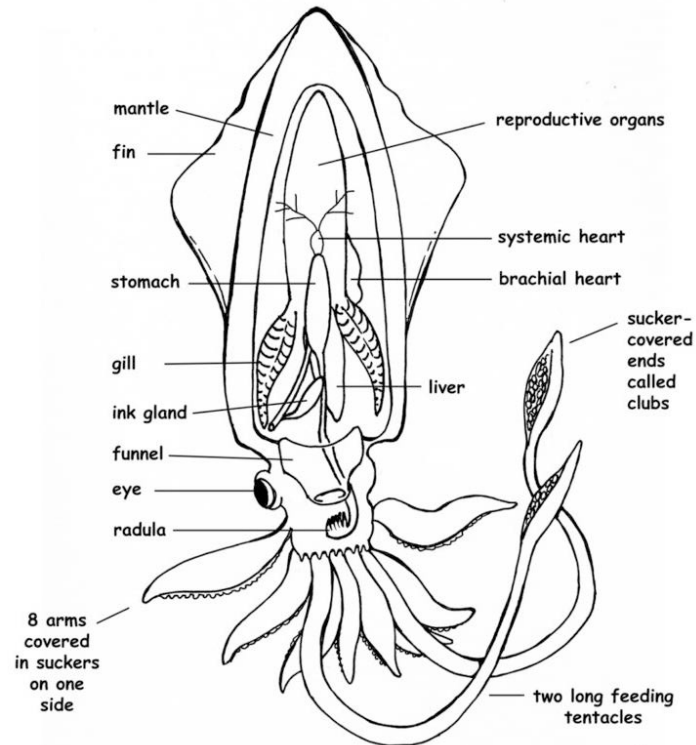
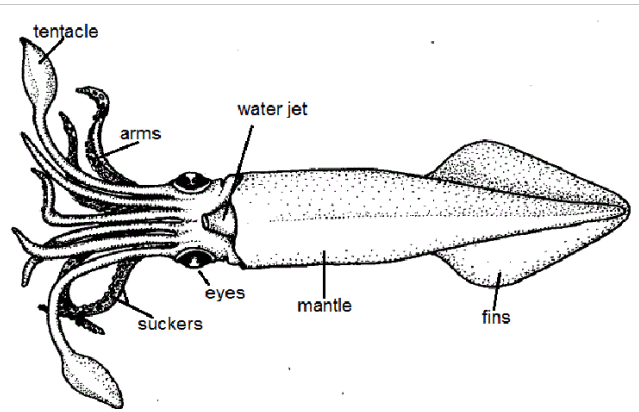
Identify, by colour the 5 main body parts on each class of Mollusk.

This COLOURED diagram will be handed in with your Phylum Mollusca (Clam and Squid) Lab.

Class Bivalvia



Class Cephalopoda



Glue
or tape
legend
and
Class
Gastro-
poda
page
to this
end

Shell

Mantle

Visceral Mass

Foot

Gills

Class Gastropoda

