

# Phylum Echinodermata

Spiny Skin

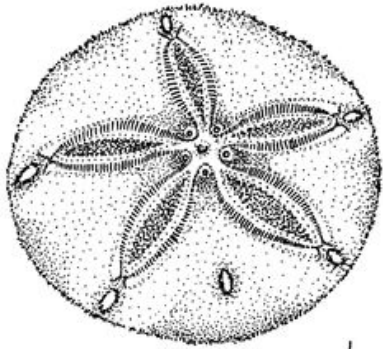
Pentaradial Symmetry

Endoskeleton  
(calcareous plates under skin)

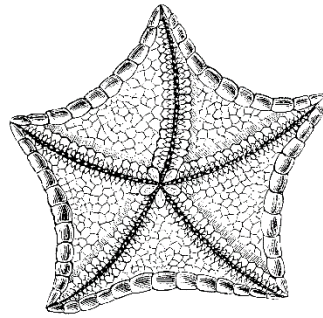
Watersvascular System

Tube Feet

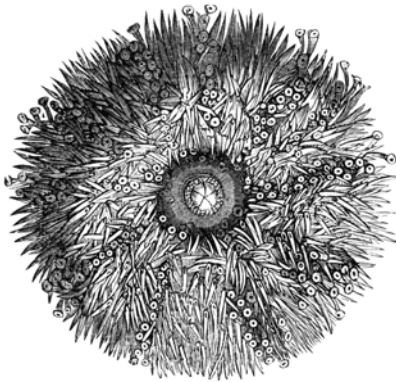
All of these are members of Echinodermata. Can you find the characteristics above on each?



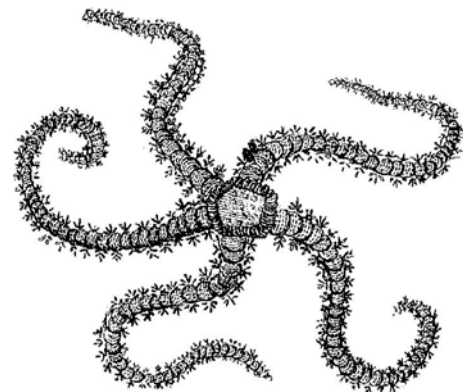
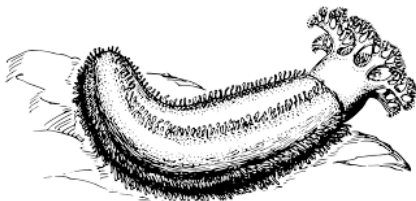
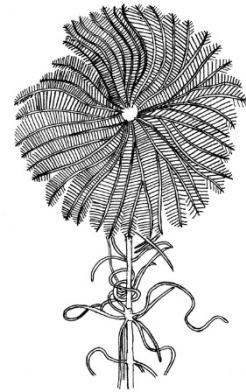
L. Livingstone © BIOODAC



L. Livingstone © BIOODAC

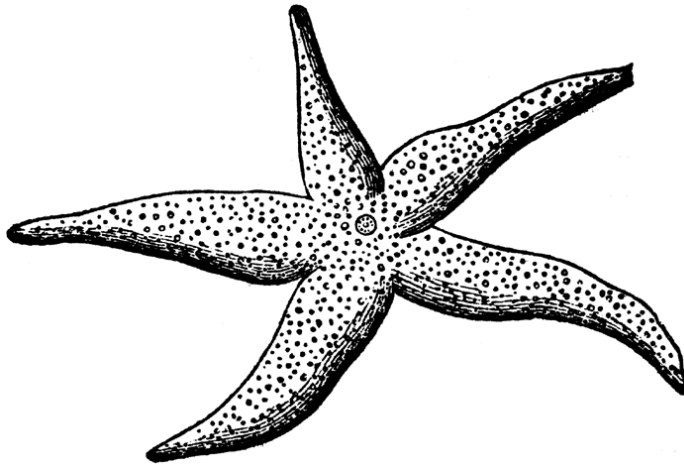


L. Livingstone © BIOODAC

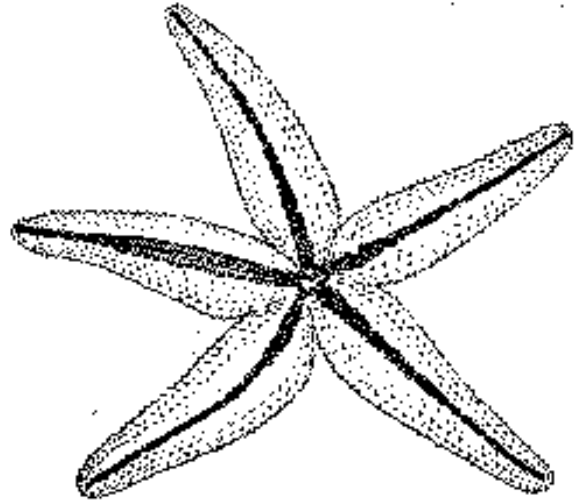


# SEA STAR LAB DIAGRAMS

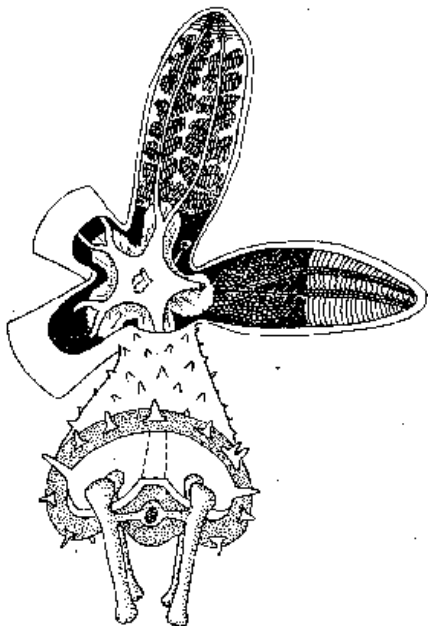
External Surface: Aboral



External Surface: Oral



Internal Anatomy:  
Digestive and Reproductive Systems



Water Vascular System

