

Phylum Arthropoda

General:

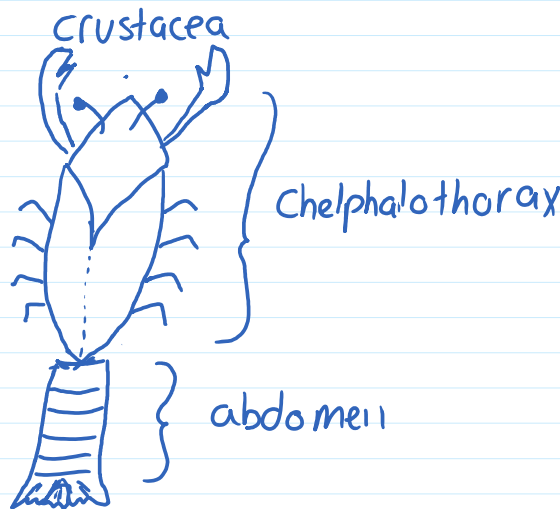
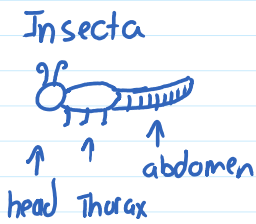
★ - advances over Molluscs

- arthro poda : jointed legs ★
 ↑ ↑
 jointed leg
- exoskeleton of chitin ★
- specialized segments ★ - head - thorax - abdomen
 cephalothorax ↳ "fused" in spider/crab
- specialized feeding appendages / mouth parts ★
- open circulation
- well developed senses & nervous system ★

Classes & Examples:

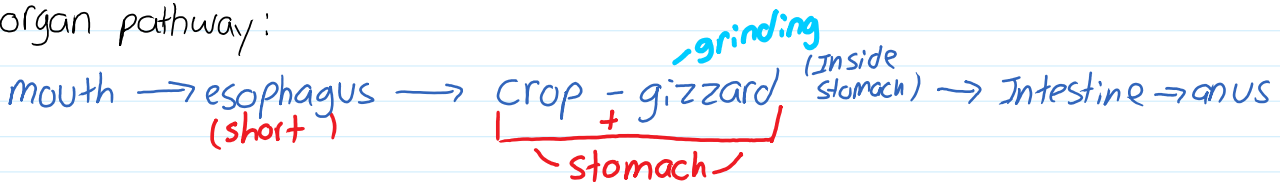
- Insecta** - 6 legs ; head-thorax-abdomen - eg) grasshopper
- Crustacea** - fused cephalothorax eg) crayfish, crab
- Arachnida** - 8 legs ; cephalothorax eg) spiders & scorpions
- Chilopoda** - lots of legs ; lots of segments; centipedes
- Diplopoda** - " " ; millipedes

Diagram:



Digestion:

organ pathway:



Respiration:

~ Stomach ~

Respiration :

- specialized structures for each class/environment

gills - aquatic = crustacea

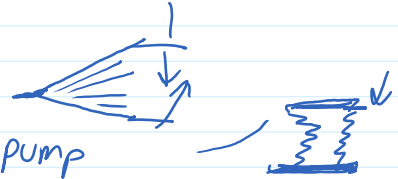
trachea & spiracles - Insecta

- system of open tubes, connected to outside by small holes (spiracles)

book lungs & spiracles - Arachnida

↳ like an accordion OR bellows

air mattress pump



Circulation :

- open circulatory system

- dorsal blood vessel

- heart & artery (s) deliver blood to sinuses (spaces),
blood bathes tissues, in sinuses & flows back into heart thru
small hole (ostia)

- body cavity (coelom) is called a hemocoel

blood

Excretion :

Insecta: - malpighian tubules

- secrete waste fluid into hindgut where
reabsorption of fluids & dissolved materials occurs

Crustacea : green glands

(like a kidney but in head area)

Nervous System :

- ventral nerve cord (like annelids)

complex arthropods

- increased brain size & complexity

- increased senses

- compound eyes (grasshopper, bee)
& simple eyes

- antennae, antennules

- "ear", typanum (membrane)

Movement : - advanced & varied

- jointed legs

- flight / wings in Insecta

- swimming if aquatic

- flight / wings in Insecta
- swimming if aquatic

Reproduction:

Asexual : None

Sexual : separate sexes , internal fertilization

- eggs may develop into form resembling adult (incomplete metamorphosis)
- OR
- young do not resemble adult (complete metamorphosis)
eg) caterpillar → butterfly
- young molt / shed exoskeleton to grow