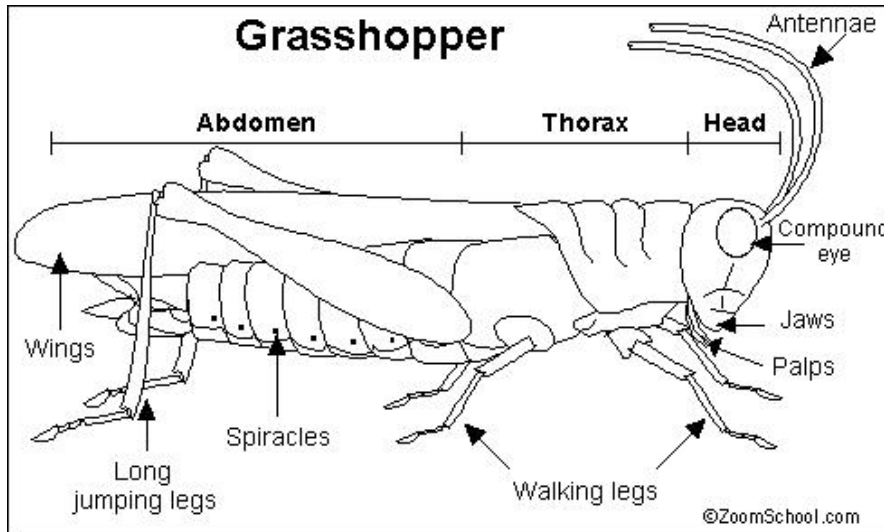


# Phylum Arthropoda

## Class Insecta



### External Features:

Exoskeleton  
(outline)

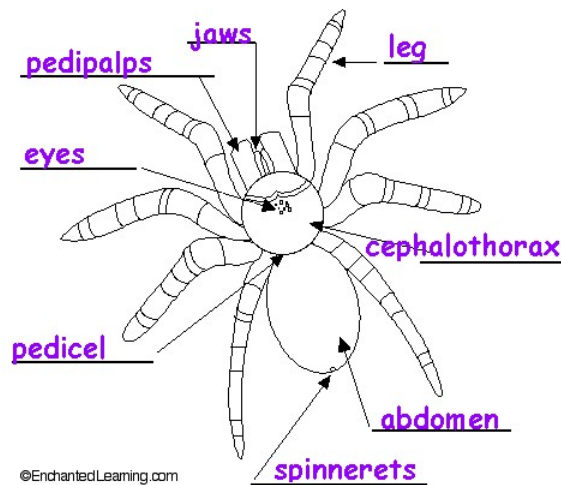
Head & Thorax  
Cephalothorax

Abdomen

Jointed  
Appendages

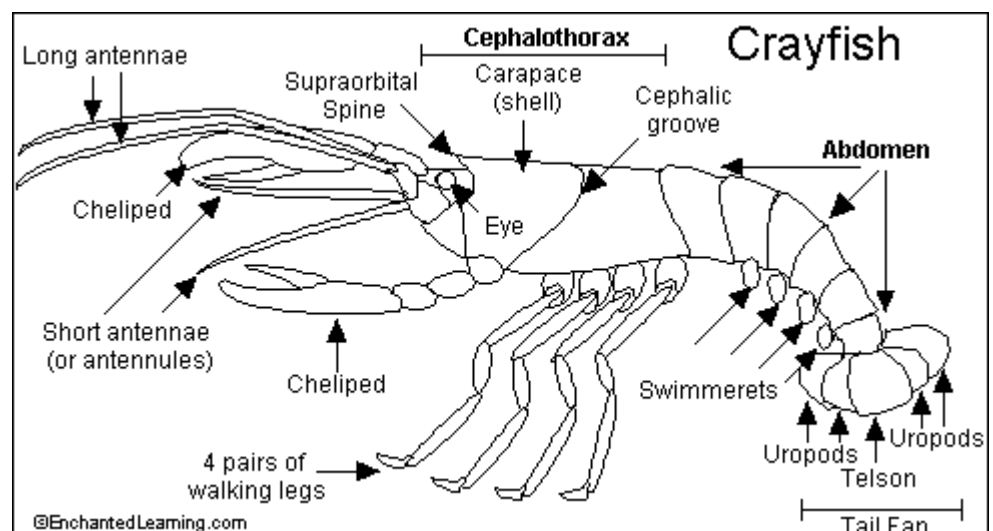
Specialized  
Mouth Parts

## Class Arachnida



## Class Crustacea

### Crayfish



**Internal Systems:**

-cross out organ labels not covered in notes or lab

Digestion  
green

Circulation  
red

Respiration  
blue

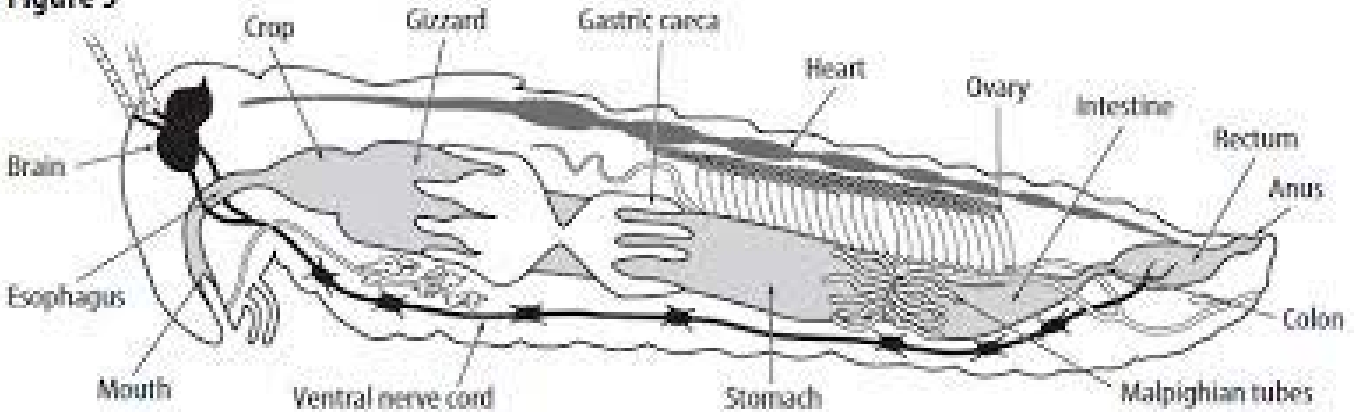
Nervous  
yellow

Excretion  
orange or brown

Reproductive  
pink or blue

**Class Insecta : Grasshopper**

Figure 3



**Class Crustacea : Crayfish**

